

univ



KE2 Series Outdoor LED

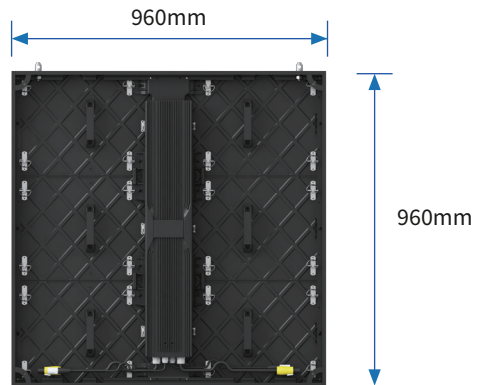
INTRODUCTION



Product Features

Available Pixel Pitch 5.71/6.67/8/10mm

- Brightness 6000/7500/9000 nits
- Panel Dimensions 960mm*960mm
- High-precision Aluminum Cabinet Design
- Matched Curve and Corner Solution Optional



Ingress Protection



Front/Rear Maintenance



Weight Only 24.5kg



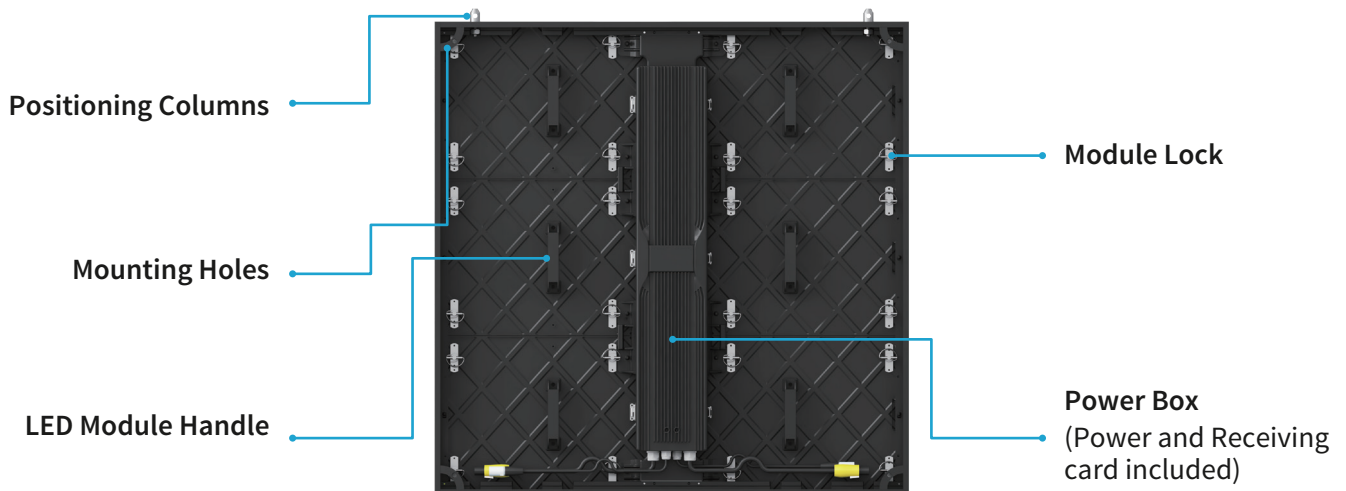
Energy Saving



CE | FCC | ETL | RoHS



High-Precision Aluminium Cabinet Design



Ultra-Light & Ultra-Thin

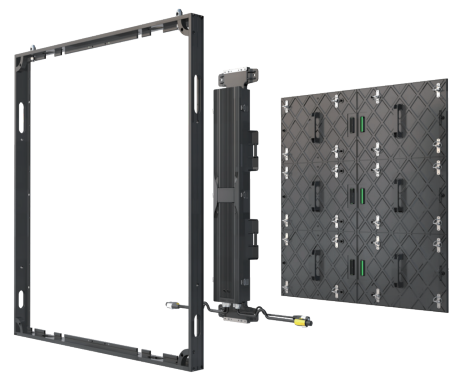
24.5Kg

76mm



Efficient Maintenance

Module and power box support front and rear maintenance.



DESIGN FOR OUTDOOR APPLICATION



High Heat Dissipation

CNC aluminum materials for module back
Fan-less design



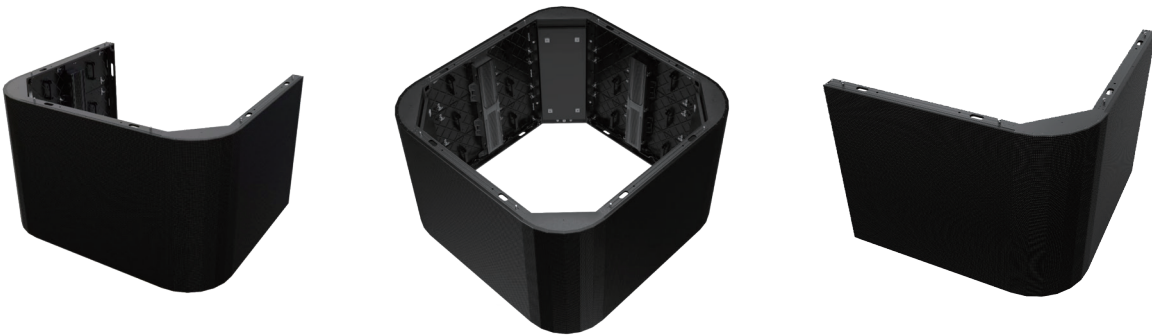
IP65

Module Ingress protection



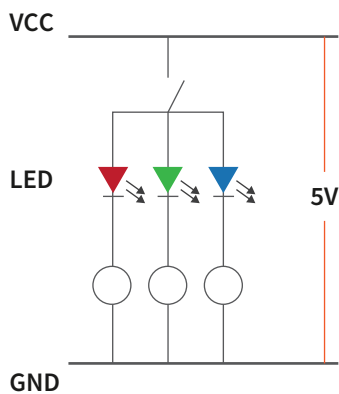
Matched Curve and Corner Solution Optional

Meeting with more installation requirements perfectly

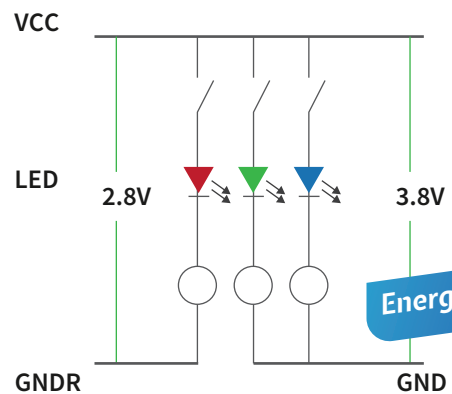


Energy Saving

Energy-saving voltage divider design, reduce the power consumption of the whole screen and saving operating costs.



Normal Power Solutions



30%
Energy Saving

Energy-Saving Voltage Divider Design

PERFECT VISUAL EXPERIENCE



Higher Visual Uniformity

Pixel by pixel calibration technology eliminates the difference in brightness and chromaticity within and between panels, improves the uniformity of display.



Clearly Visible Under Low Brightness

High grayscale level under low brightness ensures the details of the image are clearly visible.



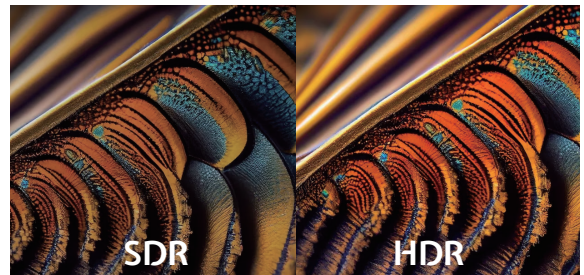
Delicate and Smooth Video

3840Hz high refresh rate eliminates streaks on the screen, enhances the clarity and contrast of the image, making the video picture delicate and smooth.



Vivid Color Displaying

HDR processing technology enhances image quality and vivid color displaying.



APPLICATION SCENARIOS



Billboard



Advertising

SPECIFICATIONS

Model	MW7857-FO-D	MW7866-FO-D	MW7880-FO-D	MW78A0-FO-D
Pixel Pitch	5.71mm	6.67mm	8mm	10mm
LED Type	SMD	SMD	SMD	SMD
Module Size(mm)	480*320*19.5			
Module Resolution	84*56	72*48	60*40	48*32
Cabinet Size(mm)	960*960*76			
Cabinet Resolution	168*168	144*144	120*120	96*96
Cabinet Weight(kg/pcs)	24.5			
Brightness(nits)	6000			
Cabinet Material	Aluminum profile (die-cast aluminum for power supply box)			
Viewing Angle	160/140			
Contrast	5000 : 1			
Refresh Rate	3840			
Gray Scale Processing	14-16bit			
Input Voltage	AC 100~240V, 50/60Hz			
Input Power(Avg)	200			
Input Power(Max)	600			
Maintenance Mode	Front/Rear maintenance			
Ingress Protection	IP65			



www.unvdisplay.com

Sales: overseasbusiness@uniview.com

Technical Support: globalsupport@uniview.com

2023.11

Disclaimer: All rights reserved, including final interpretation and content amendm